



JUNGLECAT

IRRIGATION

TIGERFLOW Systems, LLC

4034 Mint Way ♦ Dallas, TX 75237 ♦ (800) 783-6756)

© 2015 TIGERFLOW



BENEFITS

- Single source responsibility
- Certificate of Product Liability Insurance
- Prefabricated and factory tested - NIST Traceable Test Facility
- UL/C-UL Listed Packaged Pumping Systems (QCZI)
- ASME Section IX Certified Pipe Welders
- AWS D1.1 Certified Structural Welders
- UL Standard 508A - Standard for Industrial Control Panels
- Engineered to Order Designs

STANDARD FEATURES

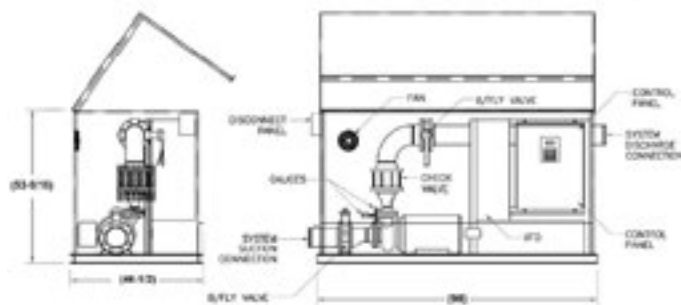
- Simplex and Duplex Units
- Fiberglass or Aluminum Enclosure
- Pumps: Vertical Multistage, End Suction, or Self Priming
- Manifolds: 304/316 Stainless Steel, NSF-61 Epoxy Coated Carbon Steel
- Isolation Valves: Lug and Grooved Butterfly, or Full Port Ball
- Control Valves: Silent Checks Valves or Pressure Reducing/Check Piloted Valves
- Skid: Structural Steel (Open or Deck plate)
- Controls:
 - » PLC and HMI based controls technology
 - » Constant Speed or Variable Speed
- ASHRAE 90.1-2010 Compliant Control Algorithm (Variable Speed Systems)
- Performance Test

APPLICATIONS

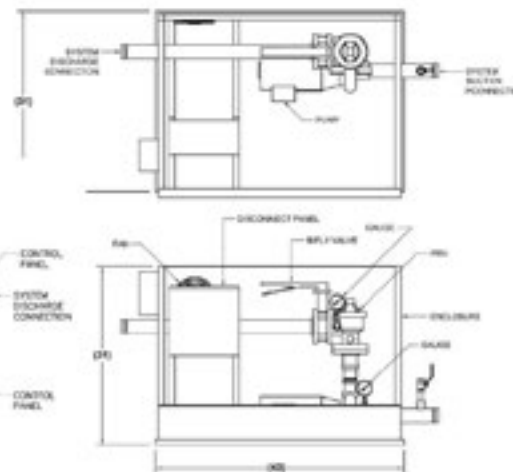
- Parks
- Sport Facilities
- Apartment Projects
- Shopping Centers
- Streetscapes
- Commercial Landscape

OPTIONS

- Start-up and Field Training
- Certified Testing with X-Y Test Reports
- Special Materials
- Extended Warranty



Standard VFD Configuration



Standard PRV Configuration

To place your order, please contact:

214-337-8780

sales@TIGERFLOW.com