

TIGERFLOW CD Series Vertical Multistage Centrifugal Pumps

www.tigerflow.com/pumps



TIGERFLOW®



TIGERFLOW®

TIGERFLOW CD Series
Vertical Multistage Centrifugal Pumps



● Specifications

Flow Rates: up to 570 U.S. GPM (130 m³/hr.)

TDH: up to 805 feet (246 m)

Pump Efficiency Index Constant Load (PEI_{cl}): <0.87

Minimum Efficiency Index (MEI): <0.7

● Operating Conditions

Designed to operate with water or any liquid with similar physical and chemical characteristics as water (light, clean, non-flammable, non-explosive, solid-free and fiber-free)

Liquid Temperature: 5°F to 248°F (-15°C to 120°C)

Ambient Temperature: ≤ 104°F (40°C)*

Altitude: ≤3280 ft. (1000 m)*

*Pumps may be run at higher ambient temperatures and elevation with the appropriate motor HP derating or consideration of reduced NPSHa.



TIGERFLOW®

TIGERFLOW CD Series
Vertical Multistage Centrifugal Pumps

ANSI/NSF-61 and ANSI/NSF-372 Certified

Hydraulically Balanced

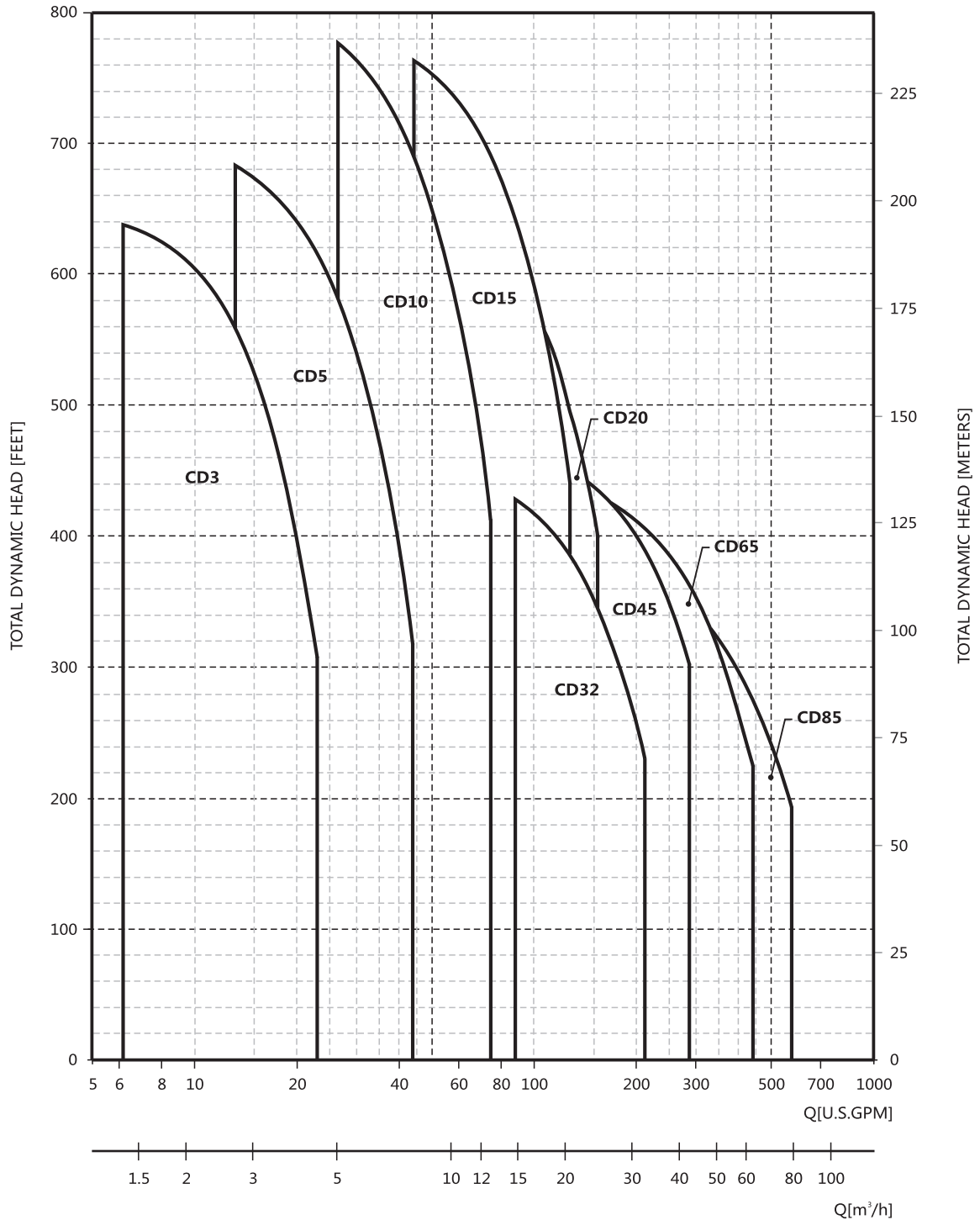
Energy Efficient

Stainless Steel Construction



TIGERFLOW CD Series
Vertical Multistage Centrifugal Pumps

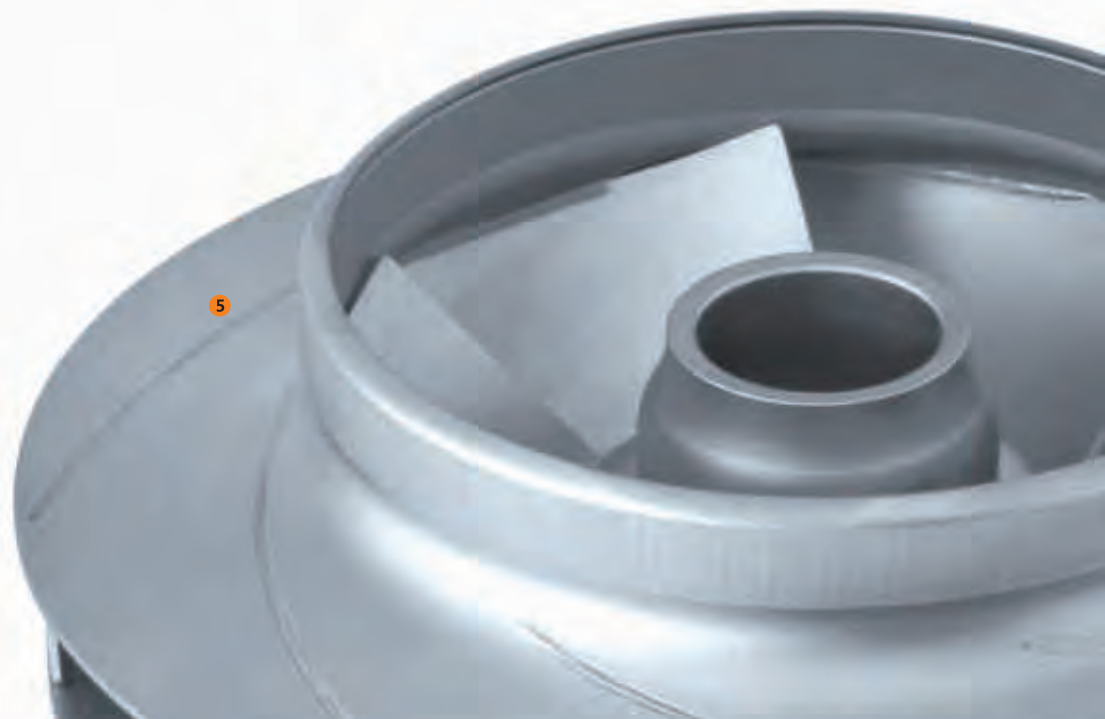
Performance Curve



TIGERFLOW CD Series
Vertical Multistage Centrifugal Pumps



- 1 TEFC, premium efficient motors are provided as standard
- 2 Hydraulically balanced impellers result in low axial thrust. This allows for the use of standard off-the-shelf motors
- 3 Dimensionally interchangeable with most other manufacturers, allowing for minimal downtime and retrofit costs
- 4 All models include a cartridge style mechanical seal for fast replacement
- 5 The impeller and guide vanes are stamped and welded with stainless steel plates using advanced robotic laser equipment, ensuring consistent quality control



Founded in 1985, TIGERFLOW Systems has been a leader and innovator in the pumping industry for over 35 years. We have grown from a small regional manufacturer to supplying pump stations, control panels and engineering consulting in national and international markets.

In 2018, the CD Series vertical multistage pumps were introduced as part of the TIGERFLOW's line of products. Developed by experienced engineers, the TIGERFLOW CD Series pumps carry the efficient and modern design that are unparalleled in the industry.

Certified through UL for ANSI/NSF-61 (potable drinking water components) and ANSI/NSF-372 (lead-free construction), CD Series pumps meet national and local requirements for the use in potable drinking water systems.

The CD series pump line supplements TIGERFLOW's vast set of pumping products including systems for potable water, fire protection, HVAC, rainwater harvesting, municipal water distribution, etc.



4034 Mint Way | Dallas, TX 75237 (214)-337-8780
www.tigerflow.com sales@tigerflow.com