

**CONTROL PANELS
MARK SERIES CONTROLLERS**



• APPLICATIONS



Schools Shopping Centers Hotels Apartment buildings Hospitals Retrofit

www.tigerflow.com

TIGERFLOW
PRODUCT OFFERING
GUIDE



**CONTROL PANELS
MARK SERIES CONTROLLERS**

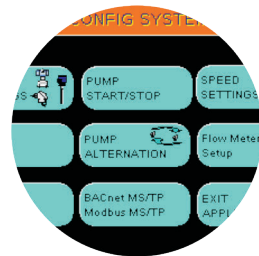
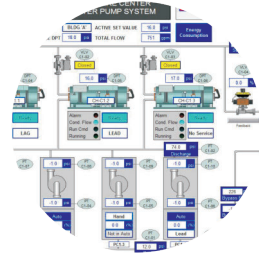
• BENEFITS

- UL 508A Listed Control Panel
- PLC and HMI controller equipment
- Intuitive, easy-to-use interface
- Custom design control algorithms and screens
- In-house electrical and controls engineers
- Modbus or BACnet communication for BMS integration and field-adjustable parameters

• STANDARD FEATURES

- Non-volatile memory for all set-points
- 6" color touchscreen HMI
- TAP Set-point adjustment technology
- Individual pump HOA and run indication
- Pump sequencing based on pressure and/or flow
- Field-adjustable settings
- Automatic pump alternation
- Event history recording up to 100 events
- Suction and discharge pressure readings in psi
- Up to 7 levels of password security
- Several PLC and HMI options available (Allen-Bradley, Schneider, Siemens, etc.)
- Communication ports RS-485, RS-232, and Ethernet
- Touch-safe DC power supply
- Through-door disconnects with individual motor short-circuit protection
- Alarm horn and indicating light

• CERTIFICATIONS  US LISTED



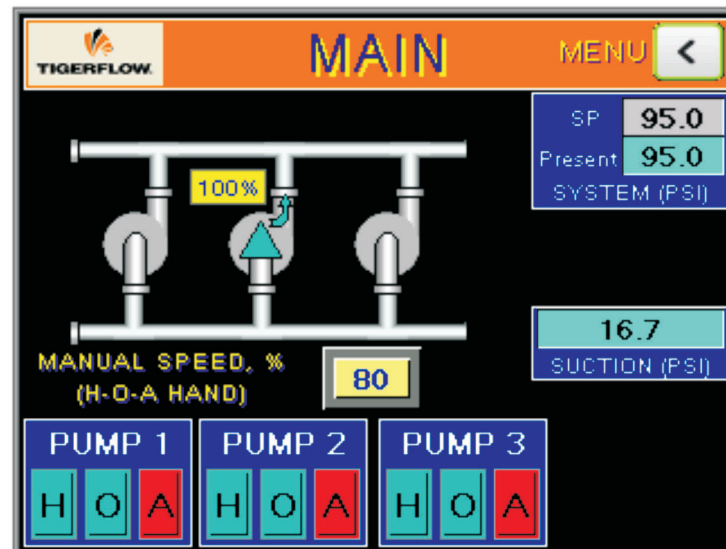
CONTROL PANELS MARK SERIES CONTROLLERS

CONTROLLER MODELS

- Mark II – Constant Speed Booster System
- Mark II – Tank Level Control
- Mark IV – HVAC Constant Speed Pumping System
- Mark V – Variable Speed Booster System
- Mark VI – HVAC Variable Speed Pumping System
- Mark VIII – Data Center Control System
- Mark R – Rainwater and reuse water Pumping System
- Mark X – Total Process HVAC System

OPTIONS

- Flow rate and totalizing flow readings
- Individual alarms dry contacts
- Pump run validation switches
- Analog signal retransmission (4-20ma or 0-10 VDC)
- Power monitoring
- Multiple power feeds
- Data-logging
- Phase monitor
- Surge and lightning arrestor
- TVSS
- Circuit breakers
- Motor overload alarms
- NEMA 4X stainless and fiberglass enclosures



TIGERFLOW PARTS



REPLACEMENT PARTS FOR ALL LINES OF PUMPING SYSTEMS

BENEFITS

- Single source responsibility
- Certified replacement parts for existing systems
- Pre-programmed controllers and variable frequency drives
- NSF-61 certified components for potable water systems
- TIGERFLOW's standard warranty
- Multiple brands and model series
- Aftermarket technical support and selection guide



If you're interested in individual tigerflow parts rather than a complete system or Aftermarket parts, contact either: parts@tigerflow.com or aftermarket@tigerflow.com