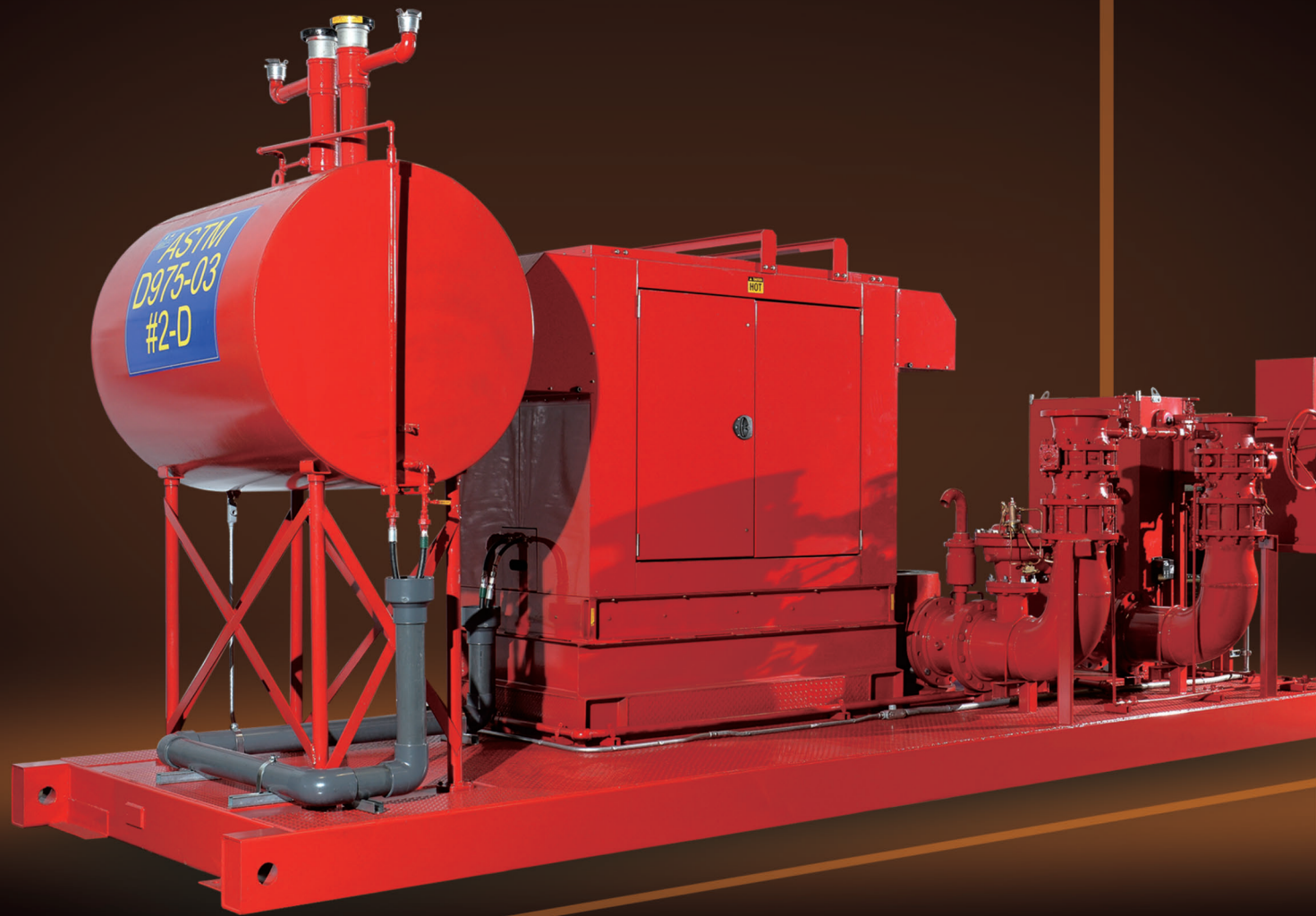


## FIRE PROTECTION PRODUCTS SYSTEMS

### PREFABRICATED FIRE PUMP SYSTEMS DESIGNED TO MEET NFPA 20 STANDARDS



#### • APPLICATIONS



Commercial Buildings



Industrial Facilities

www.tigerflow.com

TIGERFLOW  
PRODUCT OFFERING  
GUIDE



## FIRE PROTECTION PRODUCTS SYSTEMS

#### • BENEFITS

- Single source responsibility
- ETL/C Certified
- NFPA Certified Designers
- Pipe welding performed by ASME Section IX certified welders
- Structural welding performed by AWS D1.1 certified welders
- Certificate of product liability insurance
- Prefabricated and factory tested

#### • STANDARD FEATURES

- Piping design and fabrication per ASME B31.1 standard
- All electrical installation performed NFPA 70 (NEC) and OSHA guidelines
- Carbon steel structure and piping with corrosion-resistant machine grade paint

#### • OPTIONS

- Environmental enclosures with state-building certification
- Metallic and non-metallic building construction
- Seismic calculations certified by professional engineers
- A/C and Heating units
- Custom building facia
- Sprinkler systems following NFPA 13 installation
- 1 & 2-hour firewall construction
- Electric and Diesel drivers
- Diesel fuel fill stations
- Deck plate skid design

#### • DRIVER OPTIONS

- Electric Motors
- Diesel Engine

#### • PUMP OPTIONS

- End suction
- Horizontal Split Case
- In-Line
- Vertical Turbine

#### • CERTIFICATIONS

