

TIGERFLOW INLINE FIRE PUMP SKIDS



THIRD-PARTY CERTIFIED (ETL/Intertek) PACKAGED FIREPUMP SYSTEMS





FIRE PROTECTION PACKAGED SYSTEMS

• BENEFITS AND STANDARD FEATURES



- Single Source Responsibility
- ETL/C Certified Fire Pump Station
- NFPA Certified Design Engineers
- Pipe welding performed by ASME Section IX certified welders
- Structural welding performed by AWS D1.1 certified welders
- Grooved connections with adapters available
- Small footprint available to fit through 36" doorway
- UL/FM OS&Y Gate and butterfly valves with tamper switches
- UL/FM Swing check valves
- Hose-valve header
- Certificate of product liability insurance
- Prefabricated and factory tested

• STANDARD CONFIGURATION OPTIONS

- Capacity of 300-1000 GPM
- City Water Bypass (CWB)
- Flowmeter Loop
- Fire Department Connection (FDC)

• FIRE PUMP SKIDS PRICE LIST

Flow Rate (GPM)	Max Pressure (psi)	Base Price	Adders		
			CWB	FDC	Flowmeter
300	136	\$48,595.05	\$4,157.12	\$2,844.66	\$7,162.85
400	136	\$49,203.88	\$4,157.12	\$2,844.66	\$7,612.16
450	130	\$49,203.88	\$4,157.12	\$2,844.66	\$7,612.16
500	130	\$59,711.95	\$8,115.71	\$3,143.52	\$10,145.22
750	143	\$68,535.80	\$8,347.76	\$3,125.57	\$11,760.40
1000	100	\$75,090.60	\$8,481.80	\$4,782.34	\$11,816.71

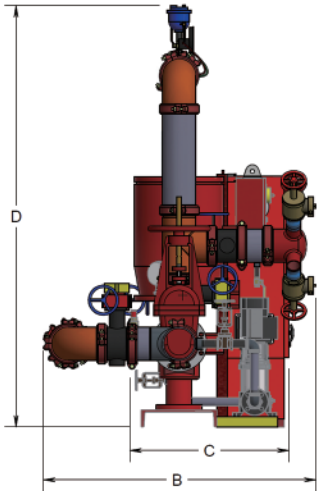
• CERTIFICATIONS





FIRE PROTECTION PACKAGED SYSTEMS

• DIMENSIONS AND WEIGHTS

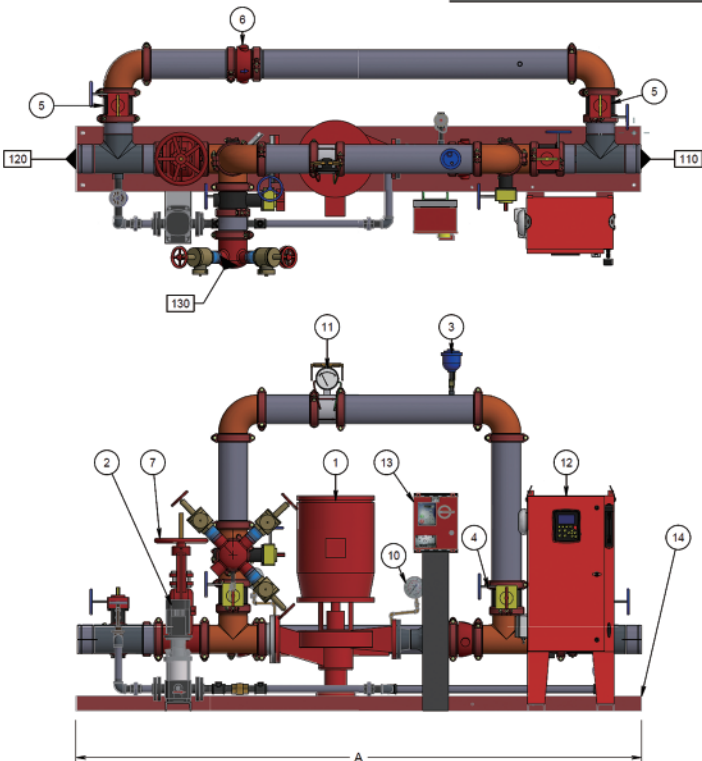


Base Model	Flow Rate (GPM)	Suction (IN)	Discharge (IN)	Flowmeter Size (IN)	Pump Model	Shipping Weight (Lbs)	Operational Weight (Lbs)
FP-300	300	4	4	4	4-383-9	3150	3300
FP-400	400	4	4	4	4-383-9	3150	3300
FP-450	450	6	6	4	4-383-9B	3300	3450
FP-500	500	6	6	6	4-383-9B	3300	3450
FP-750	750	6	6	6	4-383-10B	3300	3450
FP-1000	1000	8	6	6	8-383-15	3600	3800

Model	A	B	C	D
FP-300-IL-ELSK-HV-FM-BP	118 1/2	50	32	80
FP-400-IL-ELSK-HV-FM-BP	118 1/2	50	32	80
FP-450-IL-ELSK-HV-FM-BP	130 1/2	53	32	80
FP-500-IL-ELSK-HV-FM-BP	130 1/2	53	32	80
FP-750-IL-ELSK-HV-FM-BP	136 5/8	53	32	84
FP-1000-IL-ELSK-HV-FM-BP	152	55 3/4	32 1/2	104

* Maximum dimensions with all options

• PARTS LIST



SYM	QTY	DESCRIPTION
1	1	FIRE PUMP, INLINE
2	1	JOCKEY PUMP, TIGERFLOW CD SERIES
3	1	VALVE, AIR VENT
4	3	VALVE, BUTTERFLY, SUPERVISED-CLOSED
5	3	VALVE, BUTTERFLY, SUPERVISED-OPEN
6	2	VALVE, CHECK
7	1	VALVE, GATE, OS&Y
8	--	VALVE, HOSE CAP & CHAIN, 2-1/2"
9	1	VALVE, CASING RELIEF
10	2	GAUGE, PRESSURE
11	1	FLOWMETER, VENTURI
12	1	CONTROLLER, FIRE PUMP
13	1	CONTROLLER, JOCKEY PUMP
14	1	BASE



4034 Mint Way | Dallas , TX 75237
www.tigerflow.com

(214) 337-8780
sales@tigerflow.com
