

**IRRIGATION PRODUCTS  
JUNGLECAT**

**COMPLETE TURN-KEY SOLUTION FOR  
LANDSCAPE AND IRRIGATION  
APPLICATION**

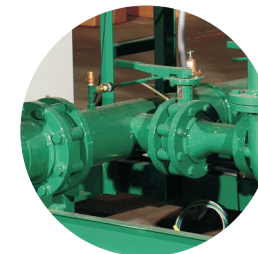
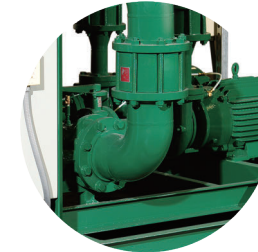


**• APPLICATIONS**



www.tigerflow.com

TIGERFLOW  
PRODUCT OFFERING  
GUIDE



**IRRIGATION PRODUCTS  
JUNGLECAT**

**• BENEFITS**

- Single source responsibility
- Certificate of product liability insurance
- Prefabricated and factory tested
- UL/ C-UL listed packaged pumping system label "QCZJ"
- UL 508A Listed Control Panel
- Pipe welding performed by ASME Section IX certified welders
- Structural welding performed by AWS D1.1 certified welders

**• STANDARD FEATURES**

- UL 508A Listed Control Panel with HMI touch screen display
- Modbus or BACnet communication for BMS integration and field-adjustable parameters
- Piping design and fabrication per ASME B31.1 standard
- Carbon steel structure and piping with corrosion-resistant machine grade paint

**• OPTIONS**

- Vertical multistage, end suction, horizontal or vertical split case, self-priming or canned turbine pumps
- 304 or 316 Stainless Steel, or carbon steel with NSF-61 certified fusion bonded epoxy coated piping
- Lug or grooved style butterfly valves
- Silent check, pressure reducing/check, surge anticipator, pressure relief, float-controlled solenoid fill valves, etc.
- Liquid-filled pressure gauges
- X-Y multiple points certified test report
- Fiberglass or aluminum enclosure

**• CERTIFICATIONS** 